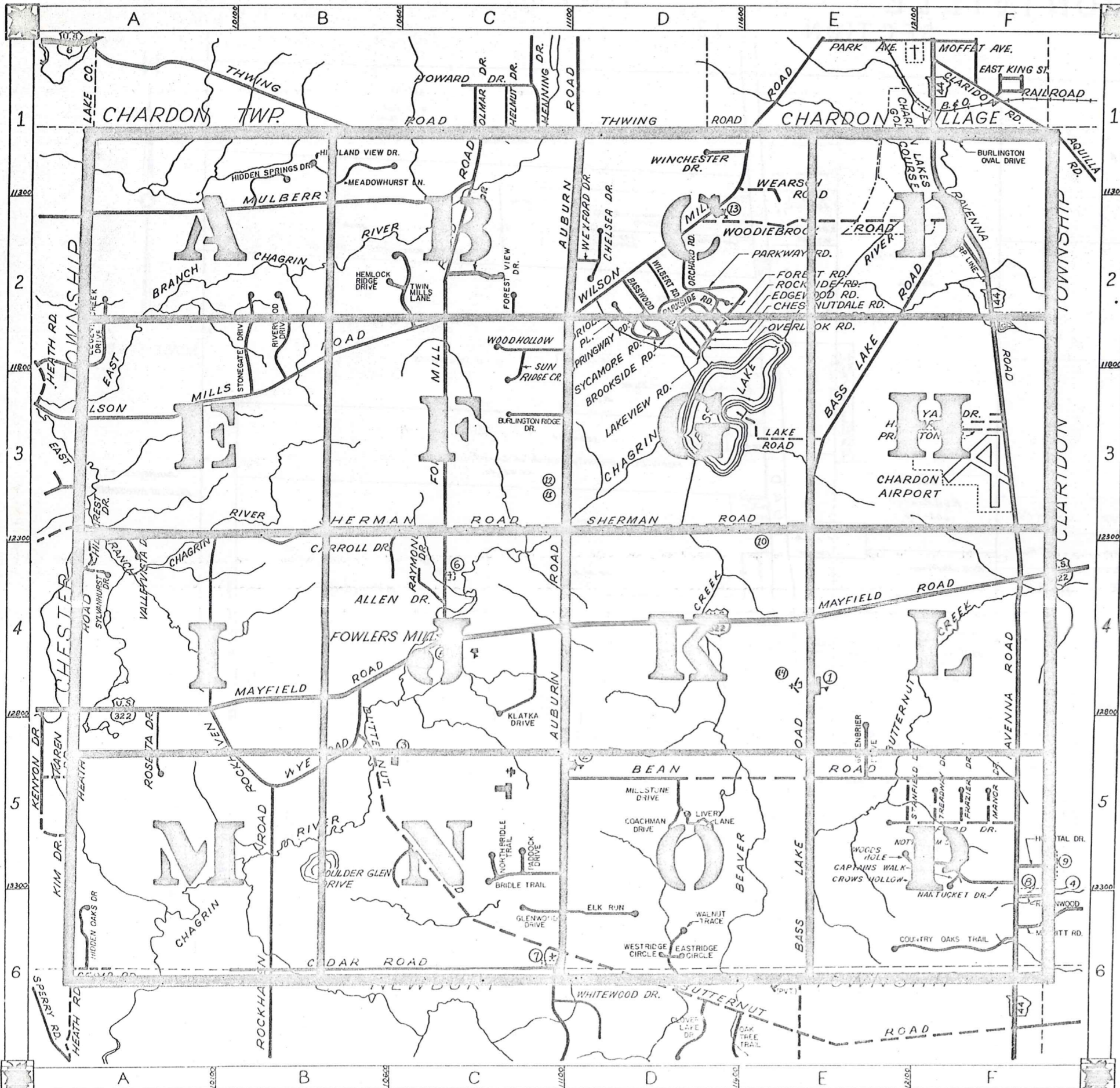


ROAD INDEX



A	ALLEN DR.	C-4	H cont.	HIDDEN OAKS DR.	A-6	R cont.	ROSETTA DR.	A-5
	AUBURN RD.	D1-C6		HOSPITAL DR.	F-5		RIVERWOOD DR.	B-3
			I					
			J					
B	BASS LAKE RD.	F2-E6				S	SHERMAN RD.	A3-F3
	BASSWOOD RD.	D-2					SPRINGWAY RD.	D-2
	BEAN RD.	D5-F5					SYCAMORE RD.	D-2
	BRADFORD DR.	F-5	K	KLATKA DR.			SYLVANHURST DR.	A-4
	BROOKSIDE RD.	D-2					STANFIELD DR.	E5
	BUTTERNUT RD.	B4-D6					STONEGATE	B3
	BOULDER GLEN DR.	C5					SUNRIDGE CR.	C-2
	BRIDLE TRAIL	C5				T	THWING RD.	B1-D1
	BURLINGTON OVAL DR.(CV)F1						TREADWAY DR.	F5
	BURLINGTON RIDGE DR	C3					TWIN MILLS LANE	B2
C	CARROLL DR.	C-4	L	LAKE RD.	E-3			
	CEDAR RD.	A6-C6		LAKEVIEW RD.	D-2			
	CHESTNUTDALE RD.	D-2		LEGEND CREEK DR.	A-2			
	CHELSEA DR.	D-2		LIVERY LANE	D-5			
	CAPTAINS WALK	F5				U		
	CROWS HOLLOW	F5	M	MAPLEWOOD RD.	D-2			
	COUNTRY OAKS TRAIL	F6		MAYFIELD RD.	A4-F4			
	COACHMAN DRIVE	D5		MULBERRY RD.	A2-C1			
D				MANOR DR.	F5			
				MEADOWHURST LN.	B-1	V	VALLEYVISTA DR.	A-4
				MERRITT RD.	F-6			
				MILLSTONE DR.	D-5			
E	EDGEWOOD RD.	D-2	N	NOLLWOOD DRIVE	C2			
	ELK RUN	D-6		NANTUCKET DR.	F5			
	EASTRIDGE CIRCLE	D-6		NORTH BRIDLE TRAIL	C5	W	WEARSCH RD.	E-2
				NOTTINGHAM CT.	F-5		WILBERT RD.	D-2
F				ORCHARD RD.	D-2		WINCHESTER DR.	D-1
	FOWLERS MILL RD.	C1-C4		OVERLOOK RD.	D-2		WILSON MILLS RD.	A3-E1
	FRAZIER DR.	F5	O	ORIOLE PL.	D-2		WOODIEBROOK RD.	D-2
	FOREST RD.	D-2					WYE RD.	B-5
	FOREST VIEW DR.	C-2					WEXFORD DR.	D-2
							WOOD HOLLOW DR.	C-2
G							WOODS HOLE DR.	F5
	GLENWOOD DR.	C6	P	PARKSIDE RD.	D-2	Y	YALE DR.	F-3
	GREENBRIER DR.	E5		PRINCETON DR.	F-3			
				PARKWAY RD.	D-2			
				PADDOCK DR.	C-5			
H	HARVARD DR.	F-3	R	RAVENWOOD DR.	F-6			
	HEATH RD.	A3-A5		RAYMOND DR.	C-4			
	HILLCREST DR.	A-4		RAVENNA RD.	F1-F6			
	HIDDEN SPRINGS DR.	B-1		ROCKHAVEN RD.	A3-B6			
	HIGHLAND VIEW DR.	B-1		ROCKSIDE RD.	D-2			
	HEMLOCK RIDGE DR.	B2						

- ① MUNSON ELEM. SCHOOL
- ② SISTERS OF NOTRE DAME ED. CENTER
- ③ SISTERS OF NOTRE DAME ED. CENTER
- ④ WELFARE DEPT
- ⑤ FOWLERS MILLS COMM. CHRISTIAN CH.
- ⑥ FOWLERS MILLS CEMETERY
- ⑦ MAPLE HILL CEMETERY
- ⑧ GAUGA COUNTY SAFETY CENTER
- ⑨ GAUGA CO. COMM. HOSPITAL
- ⑩ HEALTHER...
- ⑪ MUNSON TWP. TOWN HALL
- ⑫ MUNSON VOL. FIRE DEPT.
- ⑬ ST. LUKE'S EPISCOPAL CHURCH
- ⑭ EAGLE LUTHERAN CH. PCH

MUNSON TOWNSHIP

SCALE: 1" = 2000'

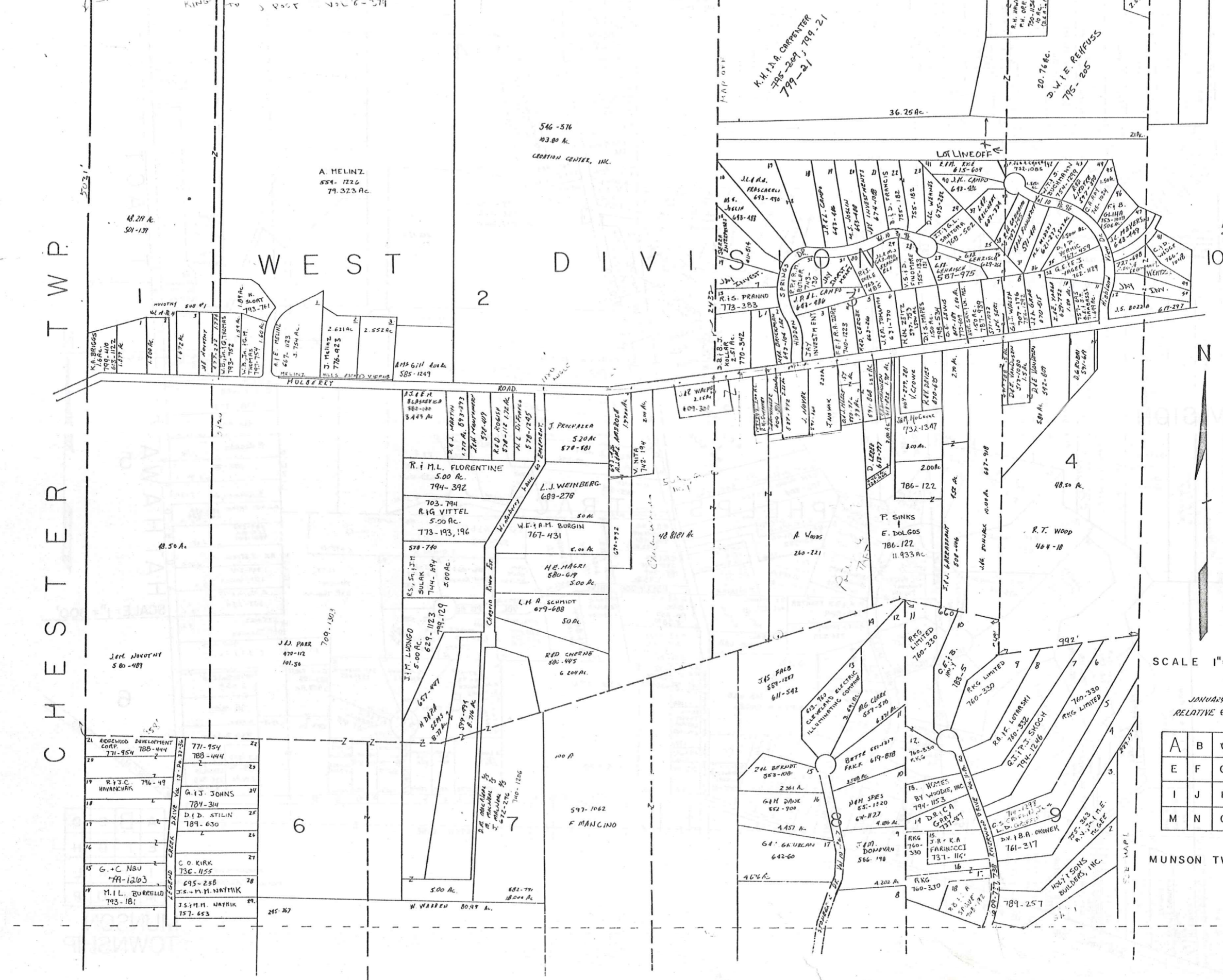
ROBERT F. PHILLIPS,
GAUGA COUNTY ENGINEER

- UNPAVED ROAD
- == PAVED ROAD
- RAILROAD
- TOWNSHIP LINE
- COUNTY LINE
- CORPORATION LINE



LAKE CHARDON TWP

CHESTER TWP



All lots except where otherwise noted to Jay Inv. 589-112



SCALE 1" = 300'

JANUARY 1, 1987
RELATIVE REPRESENTATION

A	B	C	D
E	F	G	H
I	J	K	L
M	N	O	P

MUNSON TWP

21	ANDREW DEVELOPMENT CORP. 771-954	22	771-954 788-444
19	R.J.C. HAVANCIK 796-49	23	
18	G.I.J. JOHNS 784-314	24	
17	D.I.D. STILIN 789-630	25	
16		26	
15	G.+C. NAU 779-1203	27	C.O. KIRK 736-1155
14	M.I.L. BURRELL 793-181	28	695-238 J.S.-M.H. NATHIK
		29	757-653 J.S.-M.H. NATHIK

IC H A R D O N T O W N S H I P

TH W I N G R O A D



4 WEST DIVISION

HATHAWAY TRACT

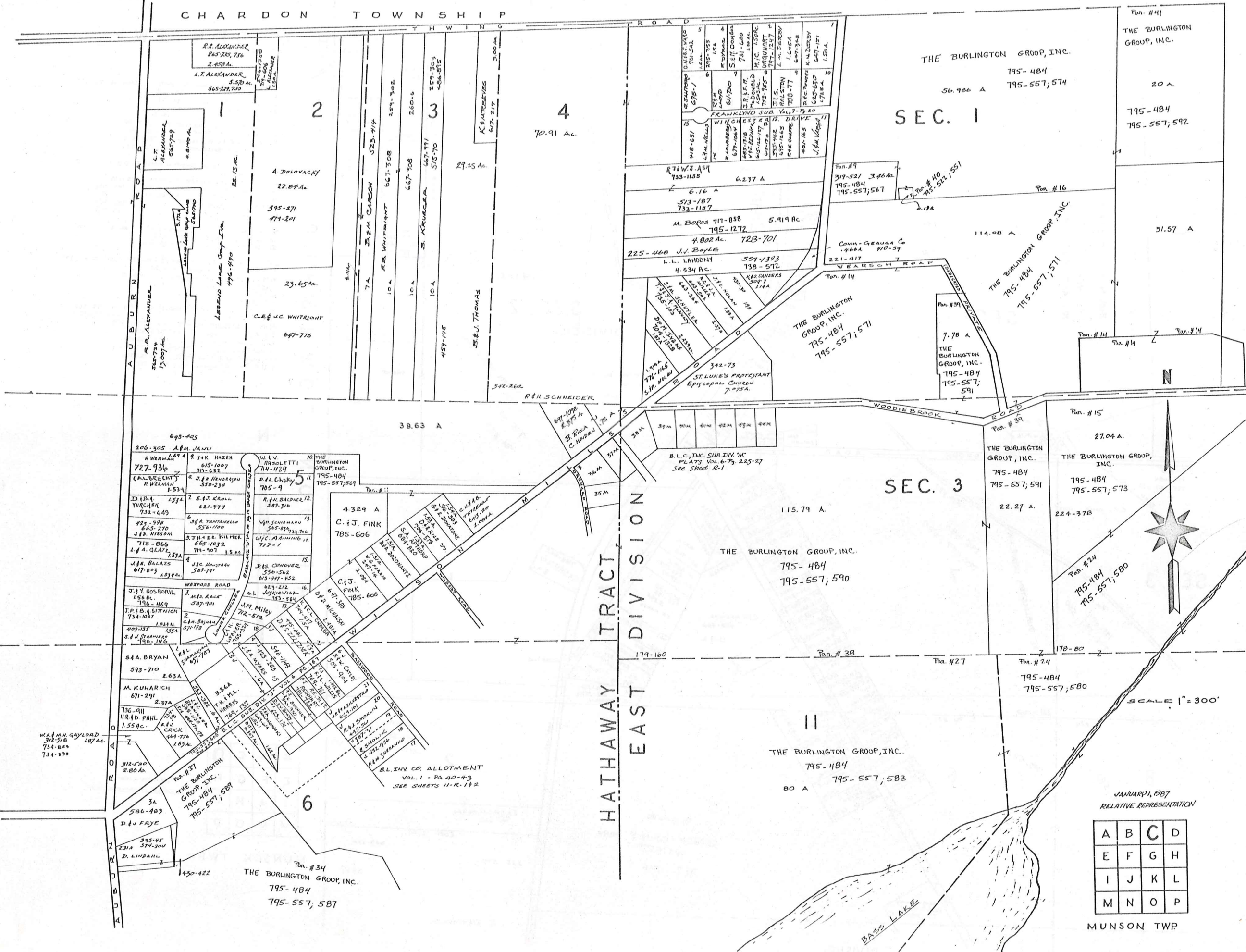
SCALE: 1" = 300'

A	B	C	D
E	F	G	H
I	J	K	L
M	N	O	P

MUNSON TOWNSHIP

JANUARY, 1907
RELATIVE REPRESENTATION

CHARDON TOWNSHIP



THE BURLINGTON GROUP, INC.
795-484
795-557,574
20 A.
795-484
795-557,592

SEC. 1

SEC. 3

HATHAWAY TRACT DIVISION EAST



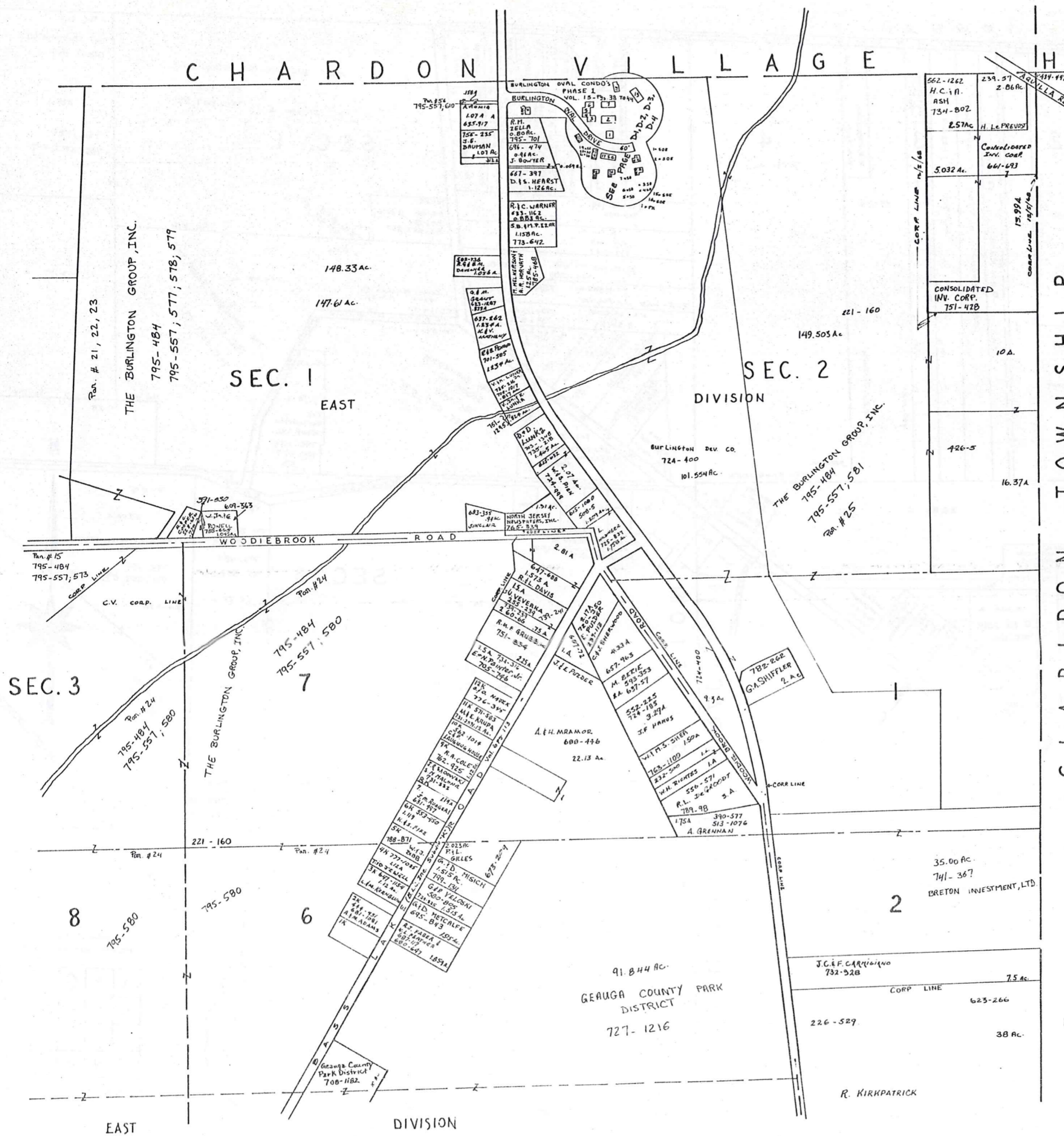
SCALE 1"=300'

JANUARY, 1907
RELATIVE REPRESENTATION

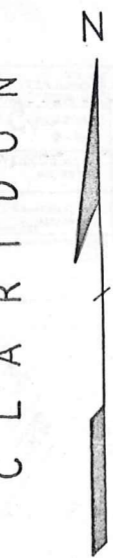
A	B	C	D
E	F	G	H
I	J	K	L
M	N	O	P

MUNSON TWP

CHARDON VILLAGE HAMBDEN TWP.



- BURLINGTON OVAL CONDOS ~ PHASE 1. (VOL. 15. PG. 38):**
- (N.O.) ~ C. R. A. GEE --- 730-649
 - (N.O.) ~ M. H. F. BURR --- 742-37
 - (N.O.) ~ C. K. J. D. J. COTTRELL --- 733-7
 - (N.O.) ~ J. H. WEISS, JR. --- 755-715
 - (N.O.) ~ H. F. B. UNDERLIED, JR. --- 752-851
 - (N.O.) ~ D. M. KING & P. G. KING --- 751-1196
 - (N.O.) ~ T. E. C. R. ZELLER --- 766-1222
 - (N.O.) ~ G. A. SHIFFLER --- 749-669; 729-1197
- BURLINGTON OF GEAUGA CONDOS ~ PHASE 2. (VOL. 15. PG. 78):**
- (S.O.) ~ R. M. FINK --- 752-595
 - (S.O.) ~ CHARDON RUBBER COMPANY --- 755-178
 - (S.O.) ~ K. KOLASKY --- 745-826
 - (S.O.) ~ D. M. MATACARDI & P. J. POLIAK --- 743-799
 - (S.O.) ~ M. H. ZAMAN --- 742-929
 - (N.O.) ~ J. D. CESNIK --- 743-700
- BURLINGTON OF GEAUGA CONDOS ~ PHASE 3. (VOL. 15. PG. 113):**
- (S.O.) ~ D. WINGE --- 754-726
 - (S.O.) ~ M. H. VACCA --- 755-431
- BURLINGTON OF GEAUGA CONDOS ~ PHASE 4. (VOL. 15. PG. 139):**
- (S.O.) ~ M. L. SHARABA --- 764-480
 - (S.O.) ~ F. E. I. E. E. REARDEN --- 766-511
 - (S.O.) ~ H. H. SCHUTT --- 769-842
 - (S.O.) ~
 - (S.O.) ~
 - (S.O.) ~ BURLINGTON OF GEAUGA INVEST. CO. --- 770-927
 - (S.O.) ~ " " " " " " --- 770-927
 - (S.O.) ~ L. MONTGOMERY --- 774-373
 - (S.O.E.) ~ E. ZEMLIKA --- 766-506
 - (S.O.E.) ~ K. M. DOERING --- 771-1204
 - (S.O.E.) ~ K. D. J. A. E. PODANY --- 775-1111
 - (S.O.E.) ~ W. J. R. LEAMAN --- 773-900
 - (P.K.) ~ R. I. C. BLAIR --- 768-310



SCALE 1" = 300'

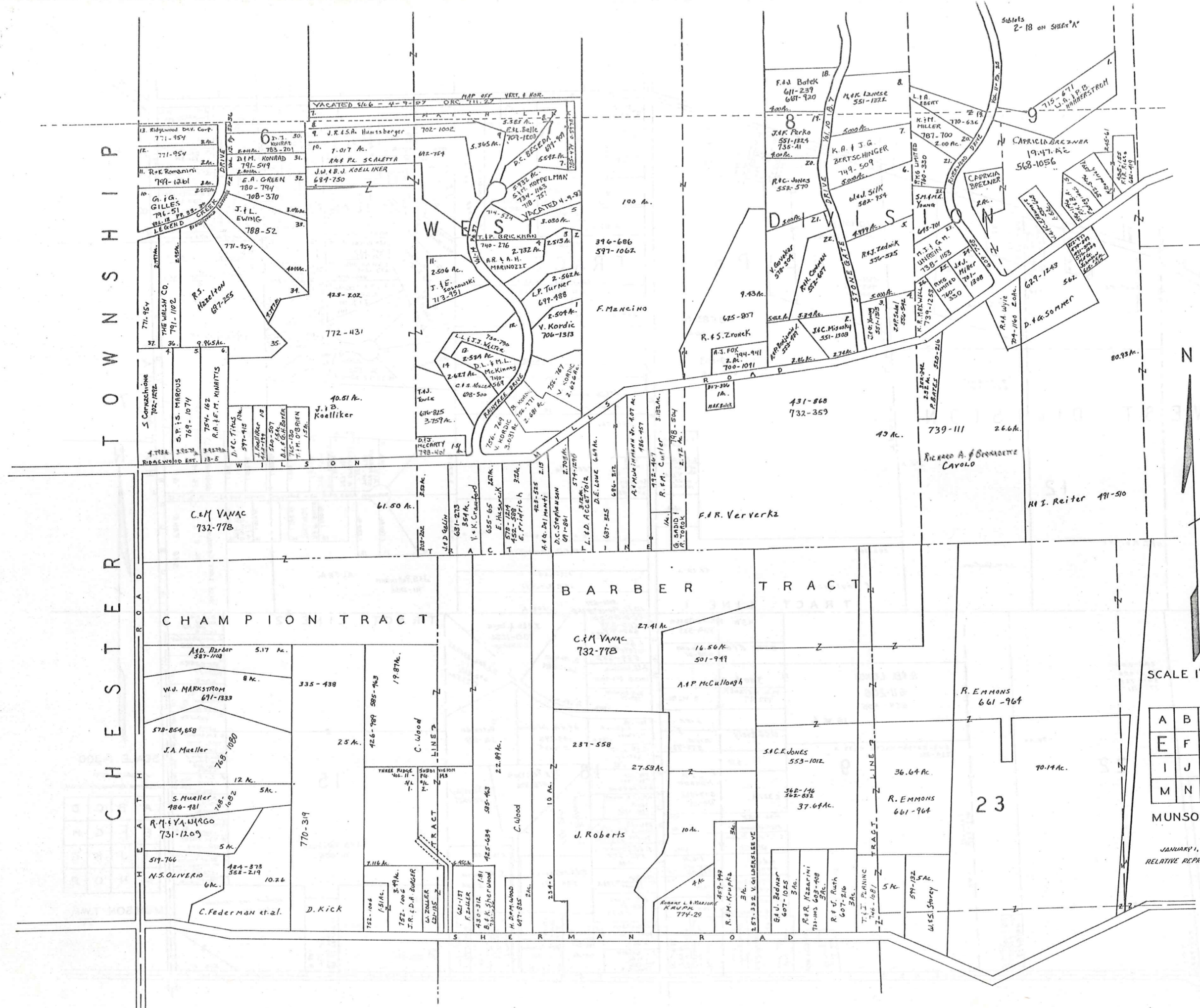
A	B	C	D
E	F	G	H
I	J	K	L
M	N	O	P

JANUARY 1, 1987
RELATIVE REPRESENTATION

MUNSON TWP

T O W N S H I P

C H E S T E R



12

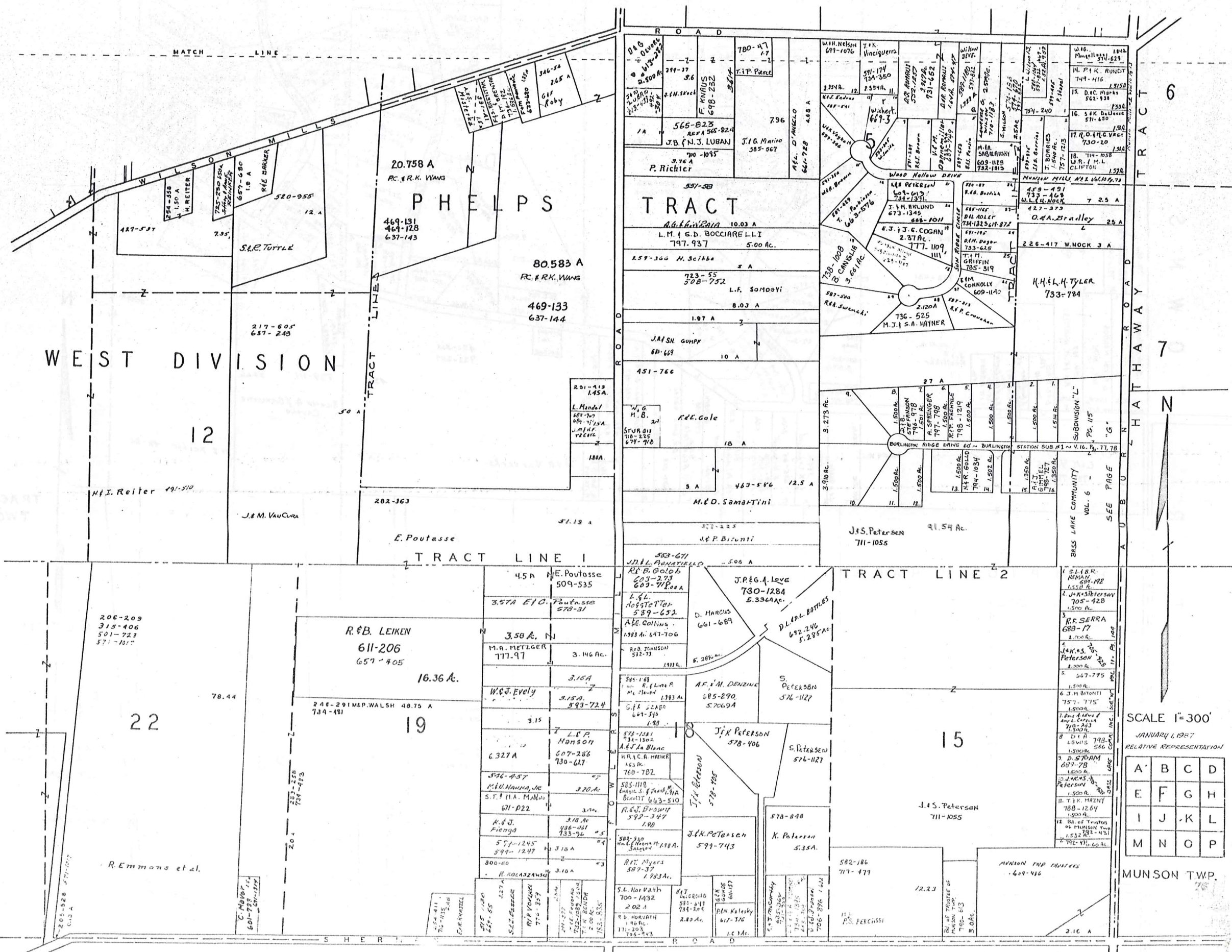
TRACT TWO

SCALE 1" = 300'

A	B	C	D
E	F	G	H
I	J	K	L
M	N	O	P

MUNSON TWP.

JANUARY 1, 1987
RELATIVE REPRESENTATION



WEST DIVISION

PHELPS TRACT

TRACT

TRACT 6

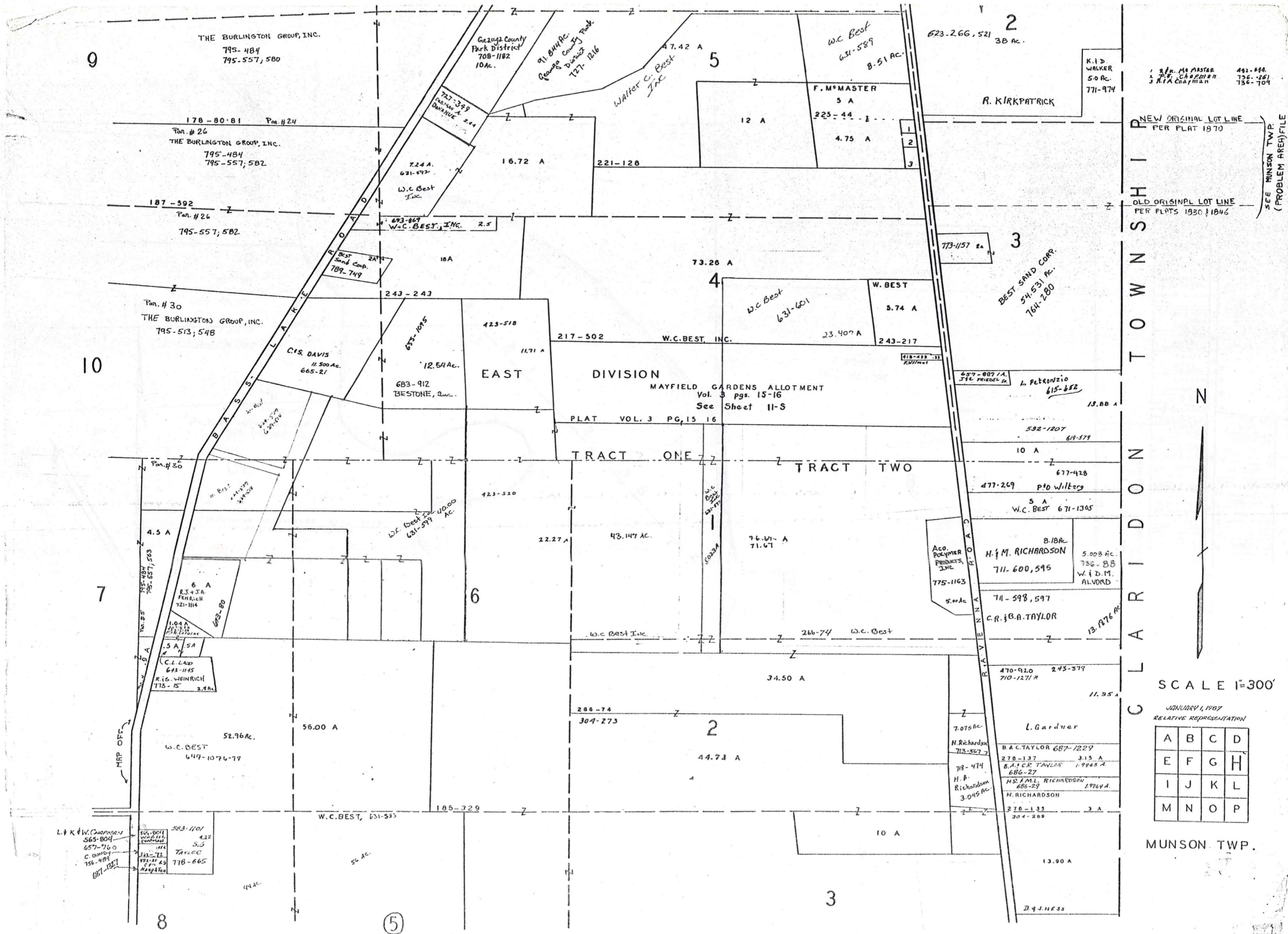
TRACT 7

TRACT 15

SCALE 1"=300'
JANUARY 1, 1927
RELATIVE REPRESENTATION

A	B	C	D
E	F	G	H
I	J	K	L
M	N	O	P

MUNSON TWP.



NEW ORIGINAL LOT LINE
PER PLAT 1970

OLD ORIGINAL LOT LINE
PER PLATS 1930 & 1946

SEE MUNSON TWP.
(PROBLEM AREA) FILE

CLARIDON TOWNSHIP

MUNSON TWP.

SCALE 1"=300'

JANUARY 1, 1987
RELATIVE REPRESENTATION

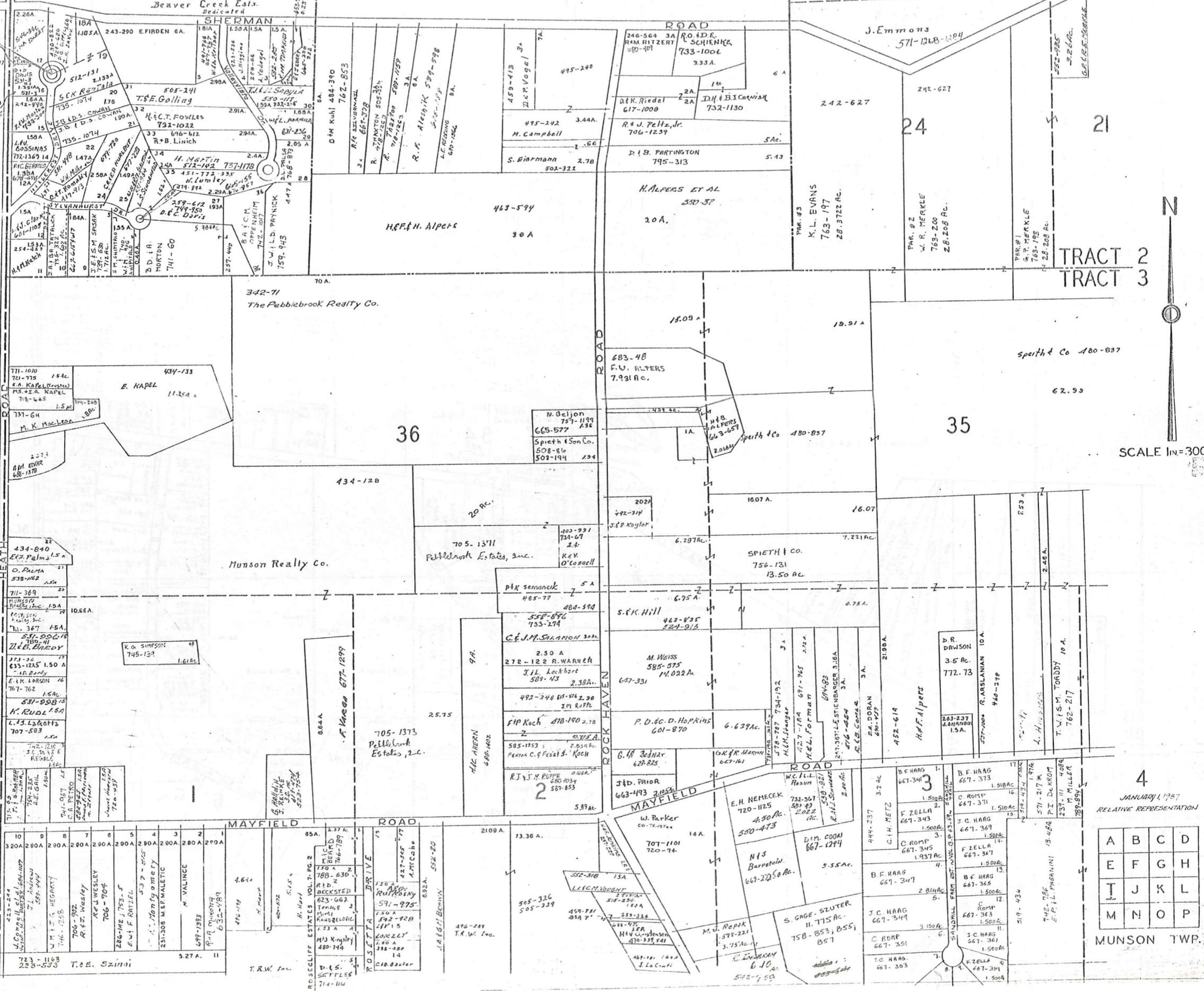
A	B	C	D
E	F	G	H
I	J	K	L
M	N	O	P

MUNSON TWP.

CHAMPION TRACT BARBER TRACT

- 5 D TEMPLE 243-42
- 6 V. J. BROWN 409-250
- 7 C. W. STEWART 607-615-617
- 8 L. J. BROWN 312-224
- 9 HAMMATH 254-423
- 10
- 11
- 12
- 13
- 14 R. M. DAVIS 239-507
- 15 R. W. MORTON 242-840
- 16 D. J. DAVIS 531-3
- 17 N. A. SWEAR 546-246
- 18
- 19
- 20 L. NELSON 271-701
- 21 R. M. ROY 361-376
- 22 S. E. WATSON 331-33
- 23 T. R. RAY 417-313
- 24 L. B. LONG STREET
- 25 L. K. CONROY 257-257
- 26 H. L. SCHNEIDER 41-716
- 27 A. DESSA 377-143
- 28 R. E. EIGHTON 433-445
- 29 C. PAINE 252-24
- 30 A. F. VODICAL 405-305
- 31 R. F. GILBERT 44-377
- 32 A. BOWLES 408-429
- 33 R. A. JANDERS 427-698
- 34 J. COTTSCING 250-305
- 35 A. ZEKANS 257-374
- 36 R. E. SANDER 277-30

CHESTER TOWNSHIP



TRACT 2
TRACT 3

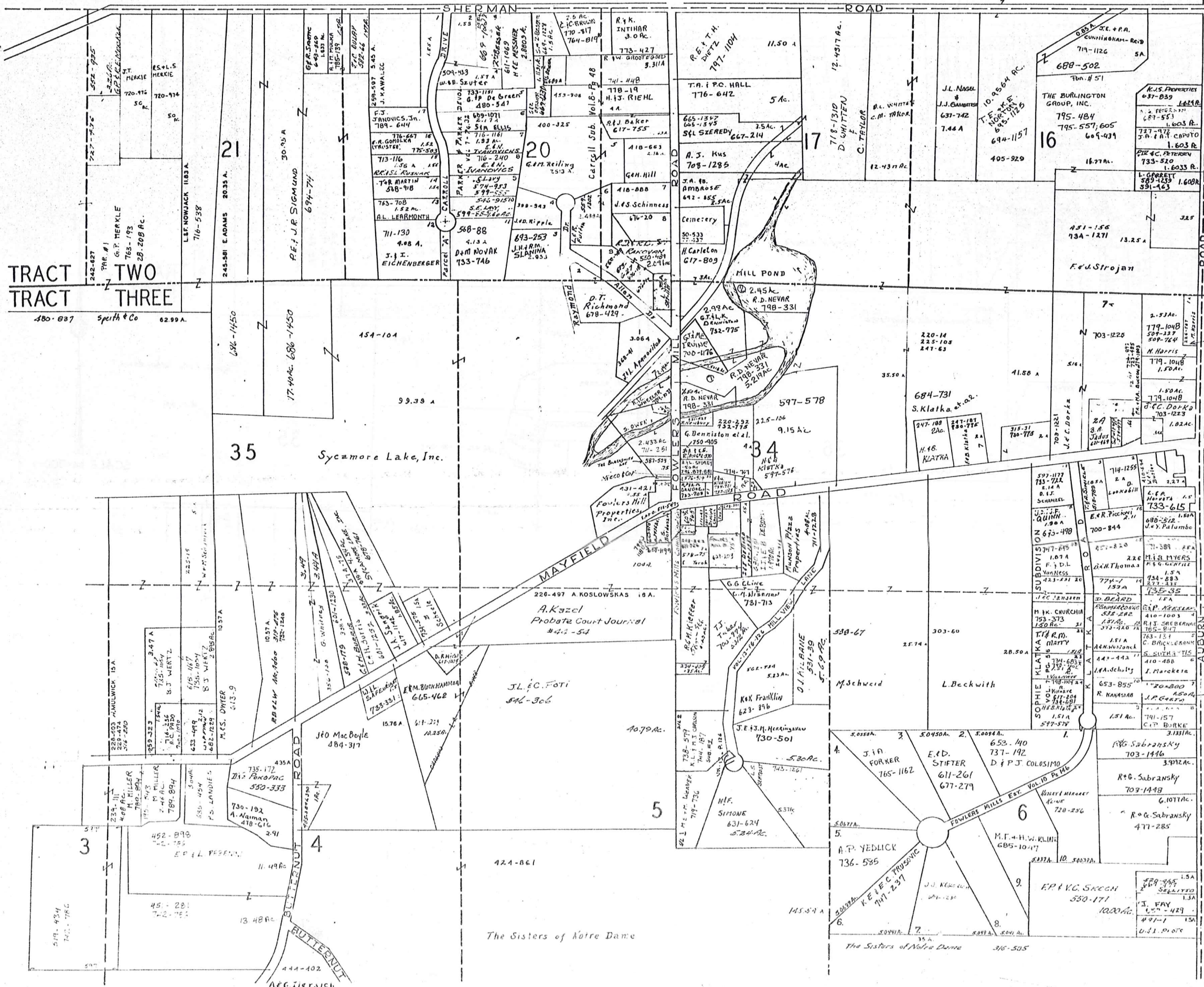


SCALE 1"=300'

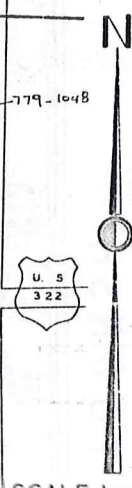
4
JANUARY 1, 1987
RELATIVE REPRESENTATION

A	B	C	D
E	F	G	H
I	J	K	L
M	N	O	P

MUNSON TWP.



- #1 - Fowlers Mill, 520-467 lot 31
- #2 - Munson Fire Dr. 255-583 lot 34
- #3 - R.C. & B.J. Erickson lot 34 741-1210

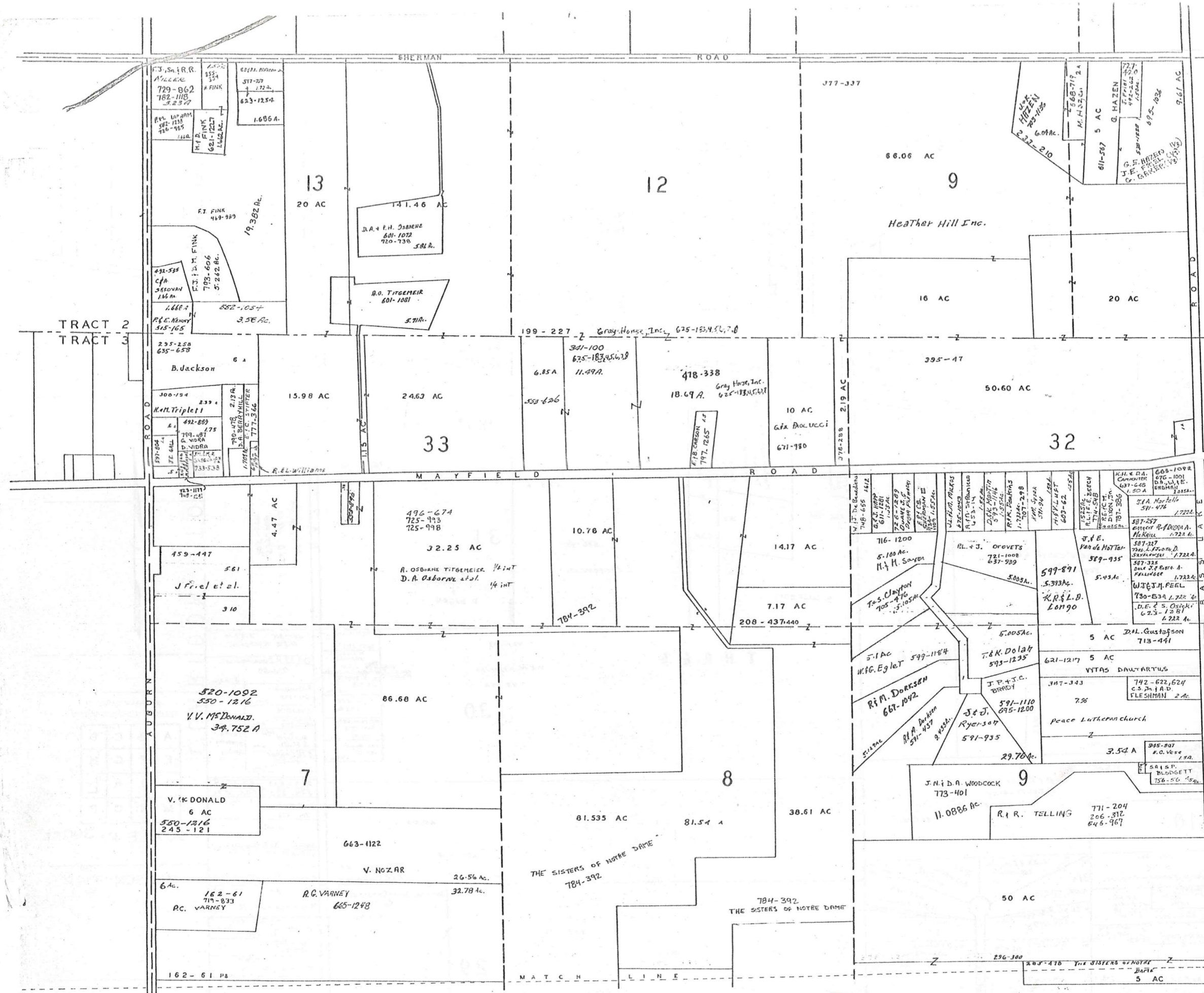


SCALE 1 in. = 300 FT.

JANUARY 1, 1937
RELATIVE REPRESENTATION

A	B	C	D
E	F	G	H
I	J	K	L
M	N	O	P

MUNSON TWP



TRACT 2
TRACT 3

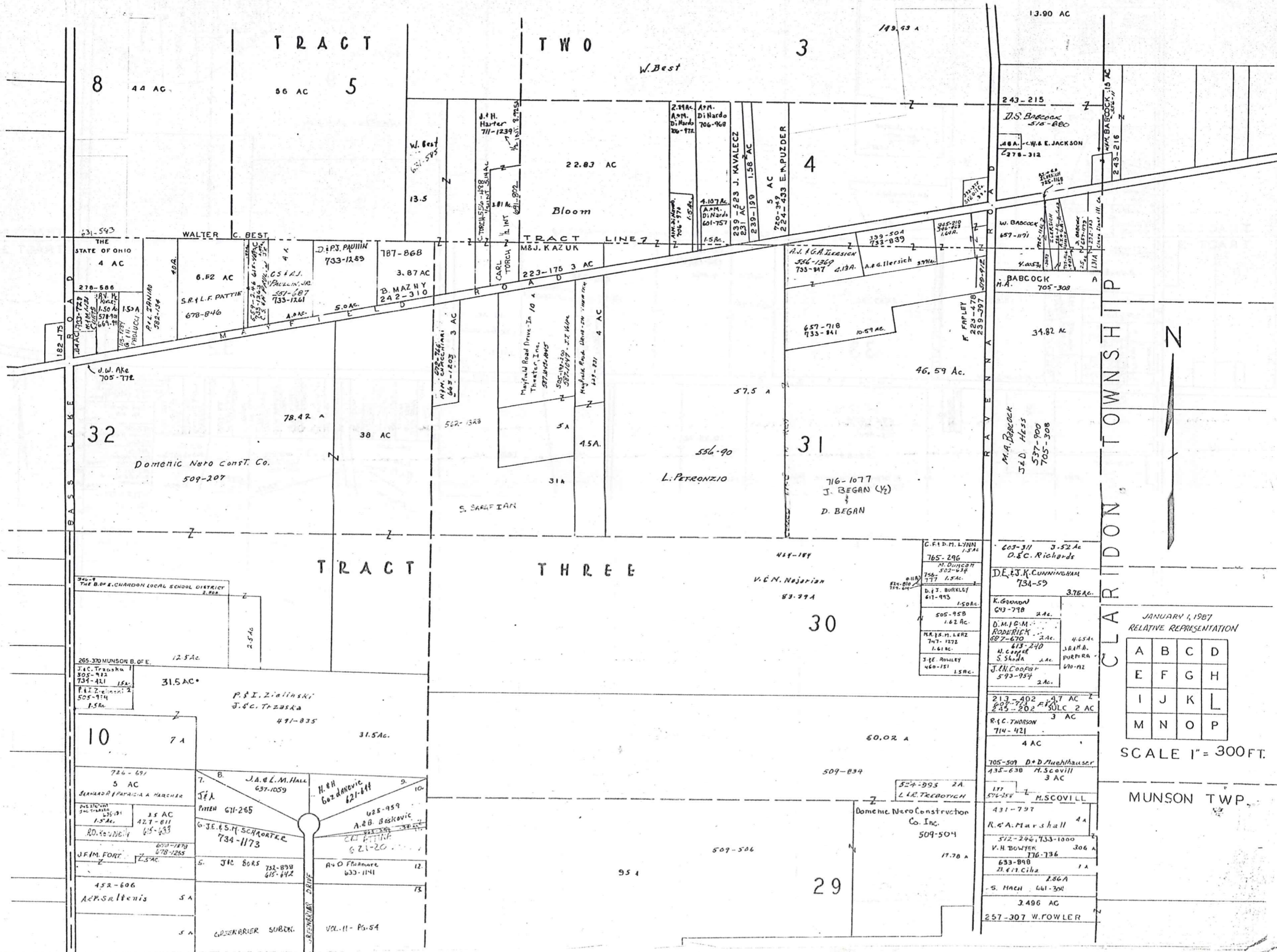
TRACT 2
TRACT 3



JANUARY 1, 1987
RELATIVE REPRESENTATION

A	B	C	D
E	F	G	H
I	J	K	L
M	N	O	P

SCALE 1" = 300 FT.
MUNSON TWP.



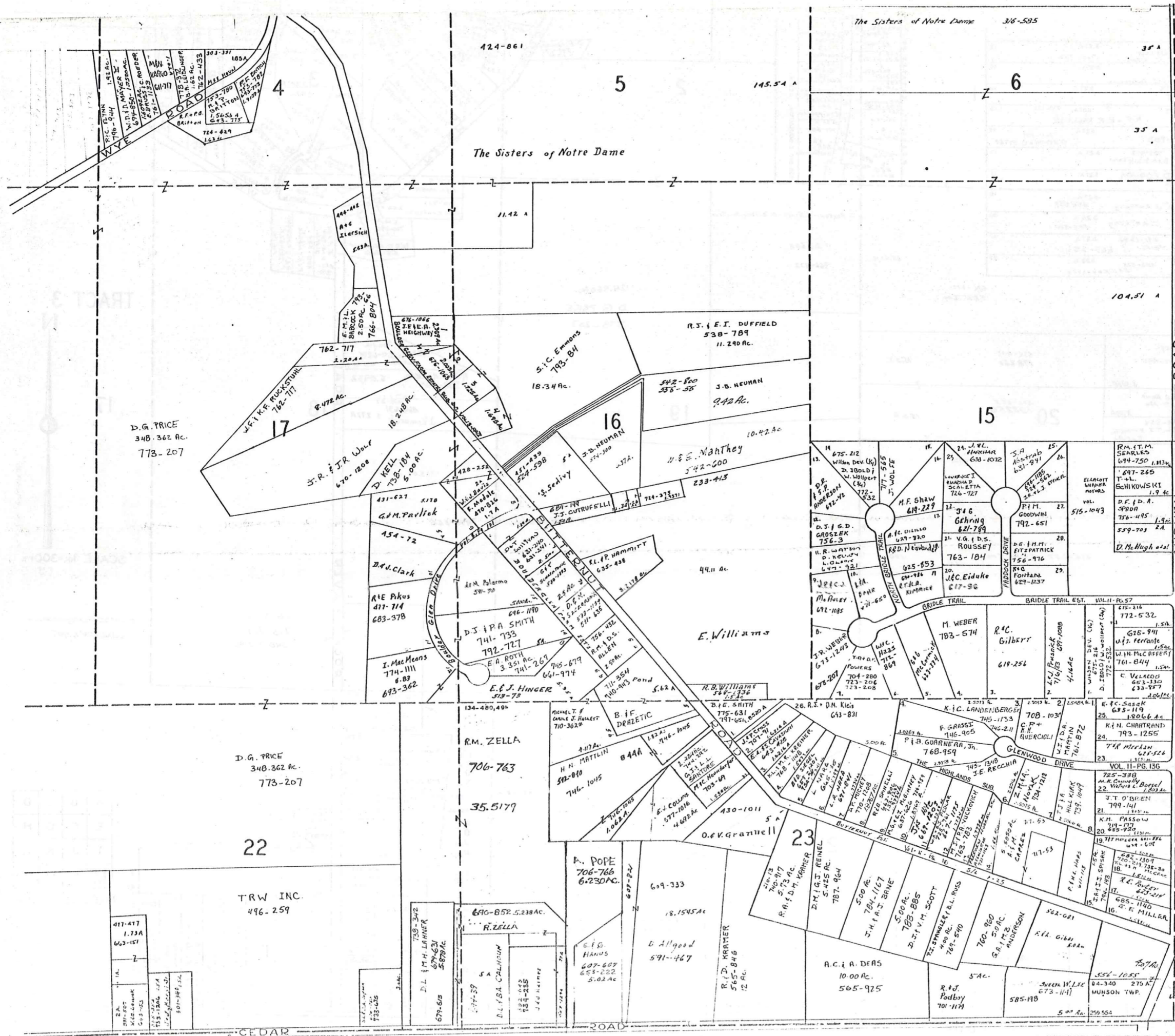
CLARIDON TOWNSHIP

JANUARY 1, 1987
RELATIVE REPRESENTATION

A	B	C	D
E	F	G	H
I	J	K	L
M	N	O	P

SCALE 1" = 300 FT.

MUNSON TWP.



BEAN ROAD

TRACT 3

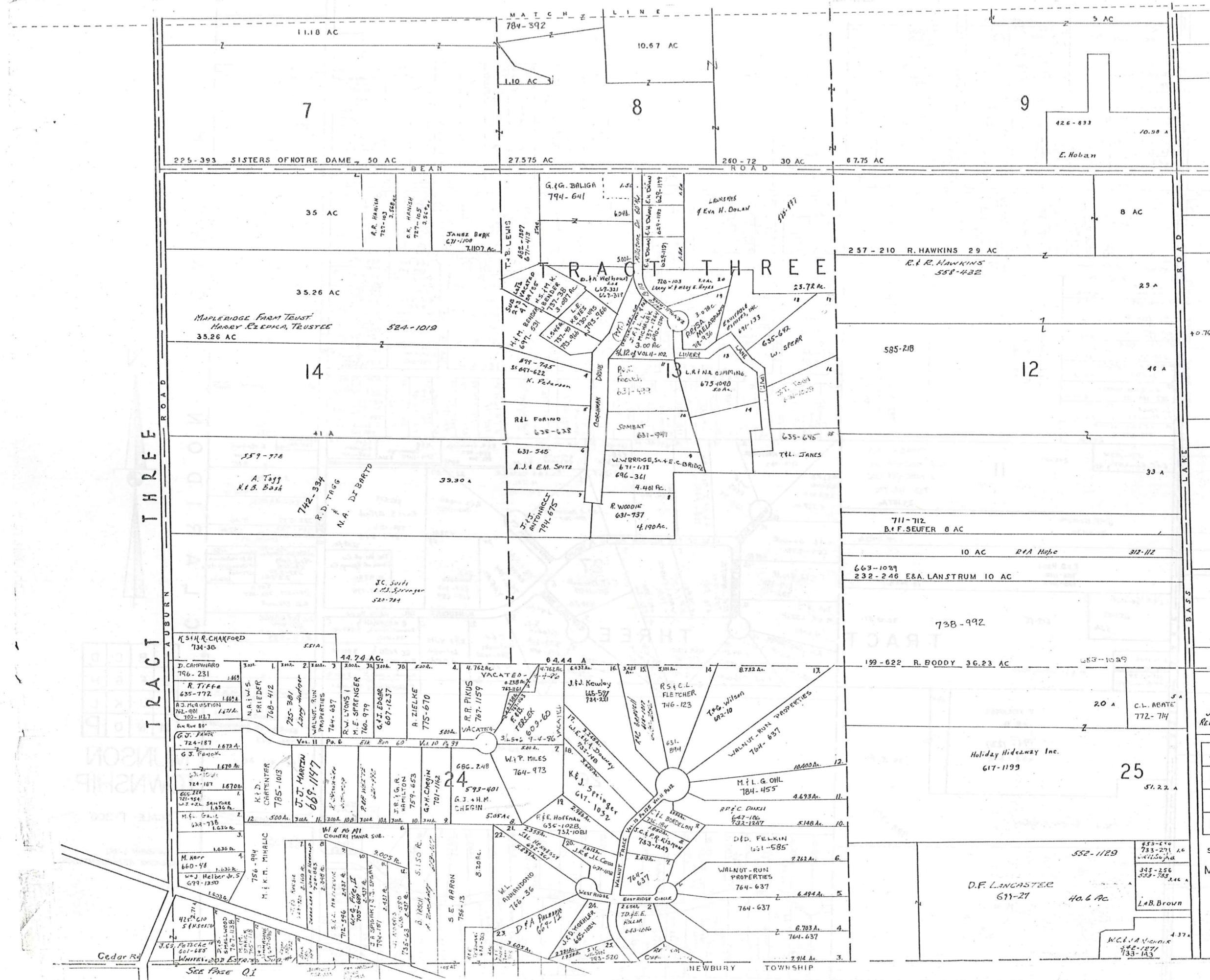


SCALE 1"=300 FT.

JAN. 1, 1987
RELATIVE REPRESENTATION

A	B	C	D
E	F	G	H
I	J	K	L
M	N	O	P

MUNSON TWP.



TRACT THREE

JAN 1, 1987
RELATIVE REPRESENTATION

A	B	C	D
E	F	G	H
I	J	K	L
M	N	O	P

SCALE 1"=300 FT
MUNSON TWP.



SCALE IN FEET
0 100 200

MUNSON
BASS LAKE INVEST.
SUBDIVISIONS
SUBLOTS 1-253 VOL. I-P40
SUBLOTS 256-284 " I-P42

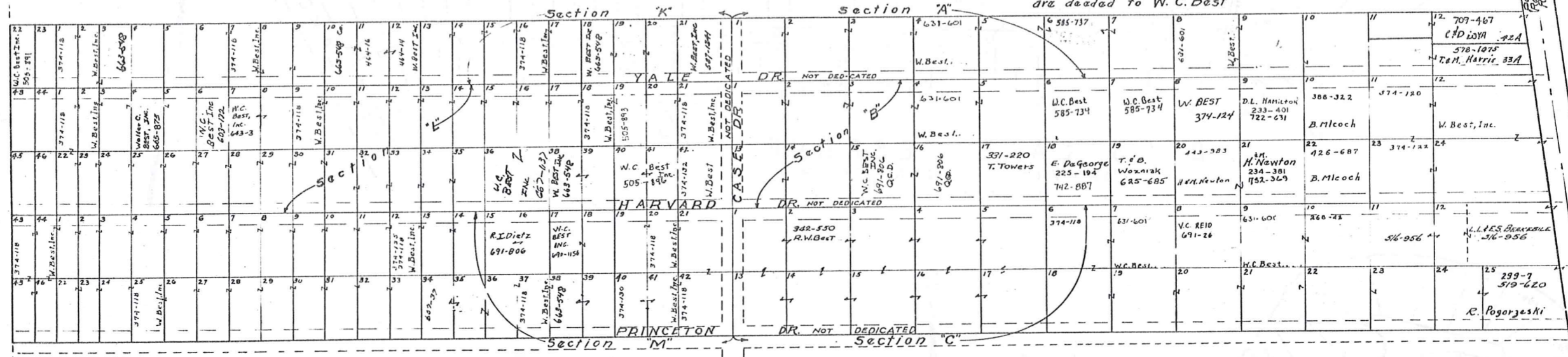
JAN. 1, 1987
RELATIVE
REPRESENTATION

11-R-1

MAYFIELD GARDENS — Subdivision No 1 Vol. 3 pgs. 15 & 16 (Plats)

Note: All lots not named are deeded to W. C. Best

Scale 1 inch = 100 feet



WALTER C. BEST INC.

SEC. K		SEC. L		SEC. M	
LOT	VOL. & PAGE	LOT	VOL. & PAGE	LOT	VOL. & PAGE
1	232 434	1	232 434	1	232 434
2	232 434	2	232 434	2	232 434
3	232 434	3	232 434	3	232 434
4	232 434	4	232 434	4	232 434
5	232 434	5	232 434	5	232 434
6	232 434	6	232 434	6	232 434
7	232 434	7	232 434	7	232 434
8	232 434	8	232 434	8	232 434
9	232 434	9	232 434	9	232 434
10	232 434	10	232 434	10	232 434
11	232 434	11	232 434	11	232 434
12	232 434	12	232 434	12	232 434
13	232 434	13	232 434	13	232 434
14	232 434	14	232 434	14	232 434
15	232 434	15	232 434	15	232 434
16	232 434	16	232 434	16	232 434
17	232 434	17	232 434	17	232 434
18	232 434	18	232 434	18	232 434
19	232 434	19	232 434	19	232 434
20	232 434	20	232 434	20	232 434
21	232 434	21	232 434	21	232 434
22	232 434	22	232 434	22	232 434
23	232 434	23	232 434	23	232 434

WALTER C. BEST

SEC. K		SEC. L		SEC. M	
LOT	VOL. & PAGE	LOT	VOL. & PAGE	LOT	VOL. & PAGE
1	232 434	1	232 434	1	232 434
2	232 434	2	232 434	2	232 434
3	232 434	3	232 434	3	232 434
4	232 434	4	232 434	4	232 434
5	232 434	5	232 434	5	232 434
6	232 434	6	232 434	6	232 434
7	232 434	7	232 434	7	232 434
8	232 434	8	232 434	8	232 434
9	232 434	9	232 434	9	232 434
10	232 434	10	232 434	10	232 434
11	232 434	11	232 434	11	232 434
12	232 434	12	232 434	12	232 434
13	232 434	13	232 434	13	232 434
14	232 434	14	232 434	14	232 434
15	232 434	15	232 434	15	232 434
16	232 434	16	232 434	16	232 434
17	232 434	17	232 434	17	232 434
18	232 434	18	232 434	18	232 434
19	232 434	19	232 434	19	232 434
20	232 434	20	232 434	20	232 434
21	232 434	21	232 434	21	232 434
22	232 434	22	232 434	22	232 434
23	232 434	23	232 434	23	232 434

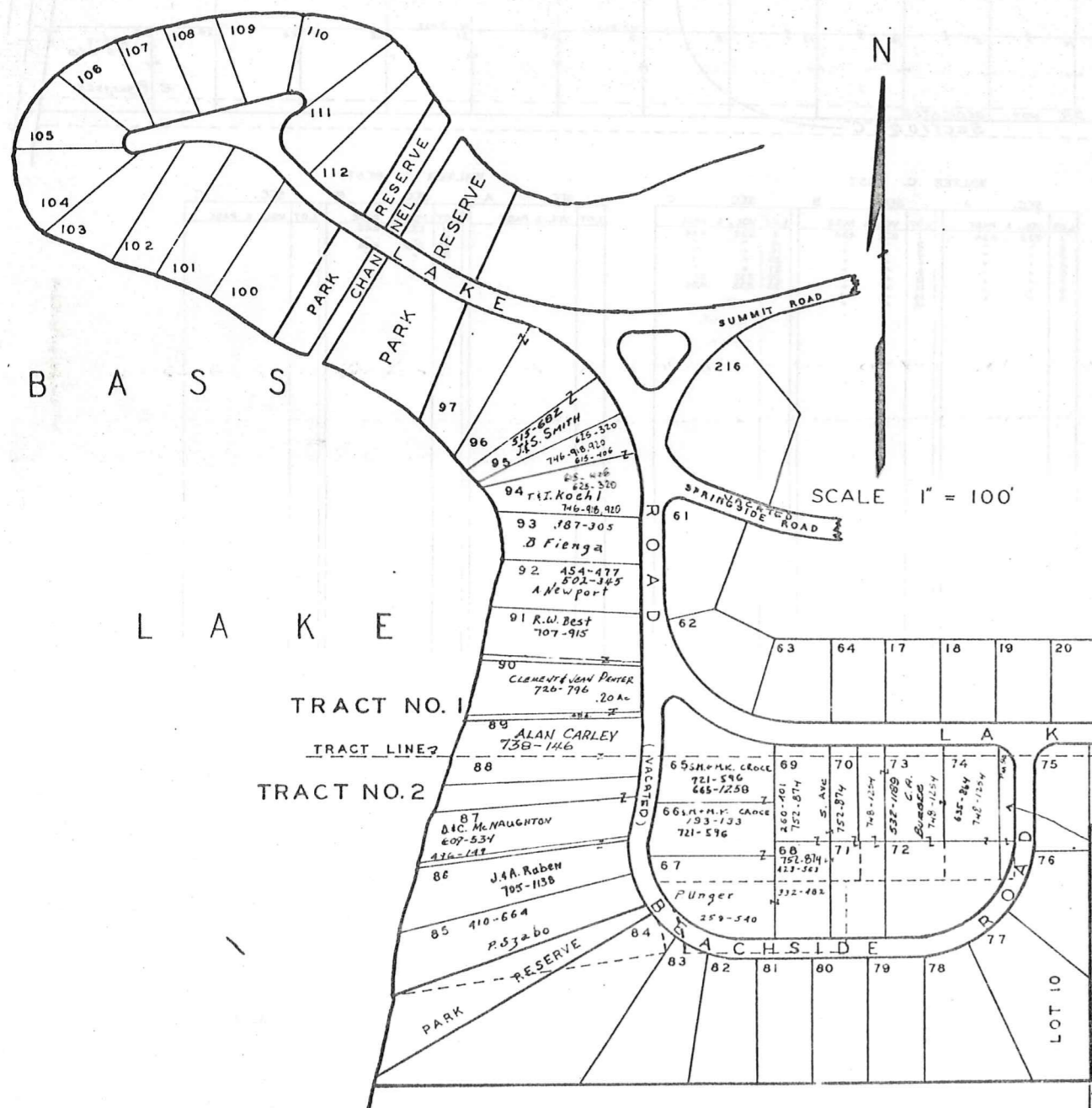
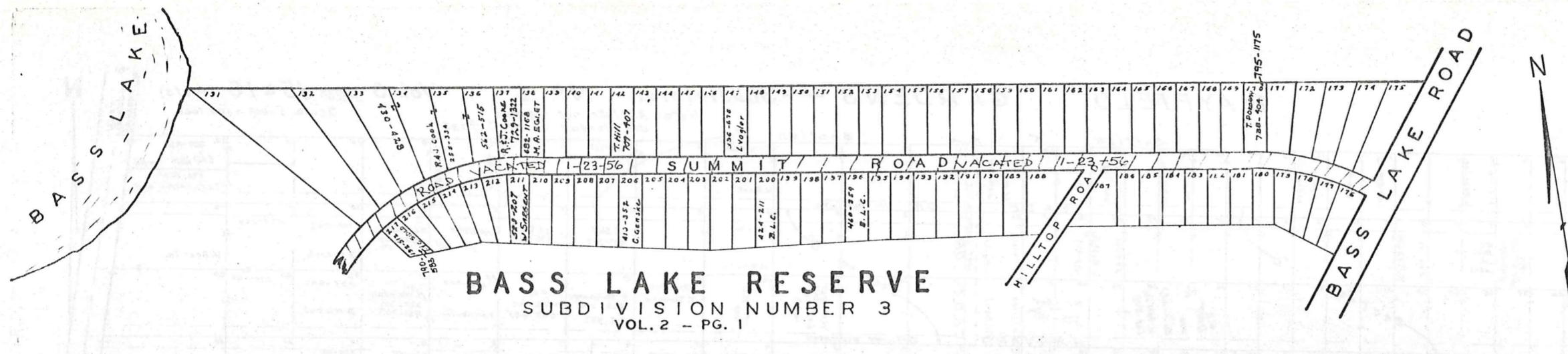
WALTER C. BEST

SEC. A		SEC. B		SEC. C	
LOT	VOL. & PAGE	LOT	VOL. & PAGE	LOT	VOL. & PAGE
1	232 434	1	232 434	1	232 434
2	232 434	2	232 434	2	232 434
3	232 434	3	232 434	3	232 434
4	232 434	4	232 434	4	232 434
5	232 434	5	232 434	5	232 434
6	232 434	6	232 434	6	232 434
7	232 434	7	232 434	7	232 434
8	232 434	8	232 434	8	232 434
9	232 434	9	232 434	9	232 434
10	232 434	10	232 434	10	232 434
11	232 434	11	232 434	11	232 434
12	232 434	12	232 434	12	232 434
13	232 434	13	232 434	13	232 434
14	232 434	14	232 434	14	232 434
15	232 434	15	232 434	15	232 434
16	232 434	16	232 434	16	232 434
17	232 434	17	232 434	17	232 434
18	232 434	18	232 434	18	232 434
19	232 434	19	232 434	19	232 434
20	232 434	20	232 434	20	232 434
21	232 434	21	232 434	21	232 434
22	232 434	22	232 434	22	232 434
23	232 434	23	232 434	23	232 434

WALTER C. BEST

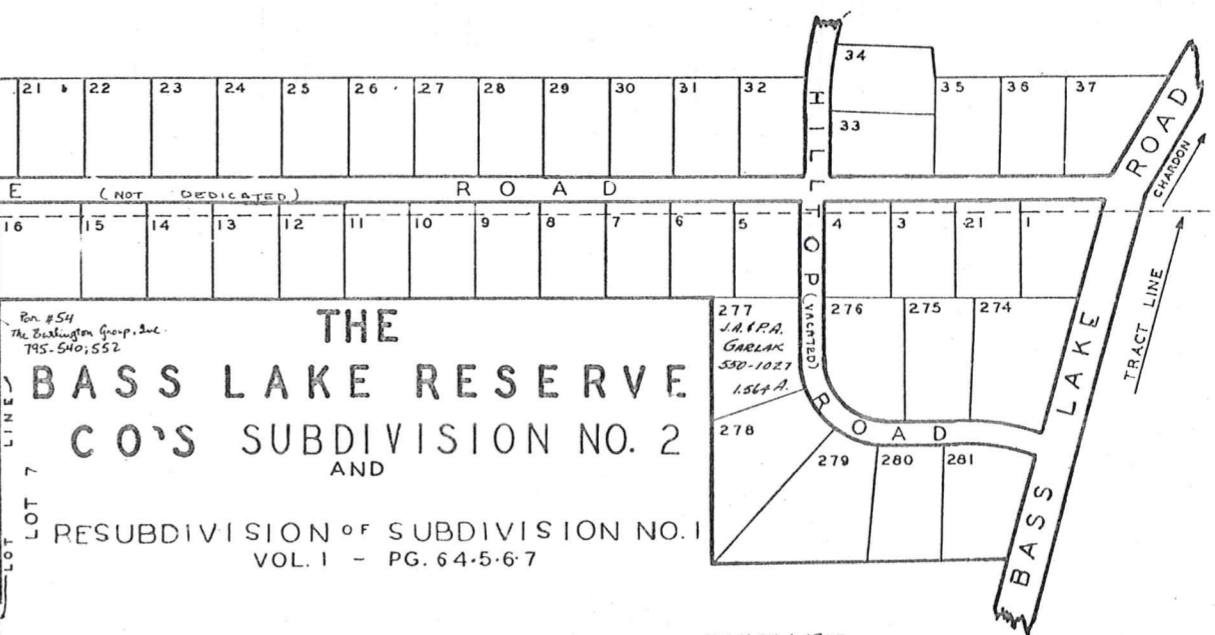
SEC. A		SEC. B		SEC. C	
LOT	VOL. & PAGE	LOT	VOL. & PAGE	LOT	VOL. & PAGE
1	232 434	1	232 434	1	232 434
2	232 434	2	232 434	2	232 434
3	232 434	3	232 434	3	232 434
4	232 434	4	232 434	4	232 434
5	232 434	5	232 434	5	232 434
6	232 434	6	232 434	6	232 434
7	232 434	7	232 434	7	232 434
8	232 434	8	232 434	8	232 434
9	232 434	9	232 434	9	232 434
10	232 434	10	232 434	10	232 434
11	232 434	11	232 434	11	232 434
12	232 434	12	232 434	12	232 434
13	232 434	13	232 434	13	232 434
14	232 434	14	232 434	14	232 434
15	232 434	15	232 434	15	232 434
16	232 434	16	232 434	16	232 434
17	232 434	17	232 434	17	232 434
18	232 434	18	232 434	18	232 434
19	232 434	19	232 434	19	232 434
20	232 434	20	232 434	20	232 434
21	232 434	21	232 434	21	232 434
22	232 434	22	232 434	22	232 434
23	232 434	23	232 434	23	232 434

RELATIVE REPRESENTATION
JAN. 1, 1987



Plan #30
THE BURLINGTON GROUP, INC.
795-513; 547

SCALE 1" = 100'



JANUARY 1, 1987
RELATIVE REPRESENTATION

Explanation and Use Sheet for Geauga County, Ohio

SAMPLE (PARTIAL) COUNTY INDEX MAP



- Township Boundary
- Township Name
- Village Boundary
- Village Name
- Tract Lot Number
- Street Name
- Acreage
- Deed Book & Page
- Owners Name
- Denotes Continous Ownership

SAMPLE (PARTIAL) MAP PAGE



- Map Page Number
- Village Name
- Village Boundary
- Township Name

SAMPLE (PARTIAL) MUNICIPALITY INDEX MAP



- Street Name
- Village Name
- Township Name

USE OF THE MAP VOLUME

1. LOCATE THE GENERAL AREA OF INTEREST ON THE COUNTY INDEX MAP, ATLAS PAGE 'B', AND NOTE THE MUNICIPALITY NAME (TOWNSHIP OR VILLAGE).
2. REFER TO THE TABLE OF CONTENTS, ATLAS PAGE 'C', AND NOTE THE BEGINNING ATLAS PAGE NUMBER FOR THE MUNICIPALITY OF INTEREST.
3. TURN TO THE PAGE INDICATED. ON THIS PAGE WILL APPEAR AN INDEX MAP FOR THAT MUNICIPALITY.
4. LOCATE THE GENERAL AREA OF INTEREST AND NOTE THE MAP PAGE NUMBER. THIS MAY BE EITHER A LETTER OR A NUMBER.
5. MAP PAGES ARE IN ALPHABETICAL (OR NUMERICAL) SEQUENCE FOLLOWING THE MUNICIPALITY INDEX MAP. FOLLOW SEQUENCE TO THE MAP PAGE INDICATED.
6. LOCATE SPECIFIC PARCEL OF INTEREST AND NOTE THE DESIRED INFORMATION.

NOTE: ON SOME MAPS YOU MAY BE REFERRED TO A DETAIL SHEET SHOWING AN ENLARGEMENT OF THE AREA. THESE MAPS ARE FOUND AT THE END OF THE REGULAR MAP PAGES IN EACH MUNICIPALITY IN EITHER ALPHABETICAL OR NUMERICAL SEQUENCE.

NOTE: CHARDON VILLAGE HAS TITLE SHEETS. TO LOCATE OWNERS NAME, NOTE THE PARCEL NUMBER, REFER TO THE TITLE PAGE FOLLOWING THE MAP OF INTEREST, FOLLOW NUMERICAL SEQUENCE TO THE PARCEL NUMBER OF INTEREST AND NOTE THE DESIRED INFORMATION. IN ALL OTHER MUNICIPALITIES THE OWNERS NAME APPEARS ON THE MAP PAGE.

This book is the property of REAL ESTATE DATA, INC. and is distributed by REDI under a leasing arrangement requiring return to REDI upon termination of the lease. REDI reserves the right to reclaim this book if found in the possession of any firm or person where possession was obtained through any unauthorized source.